

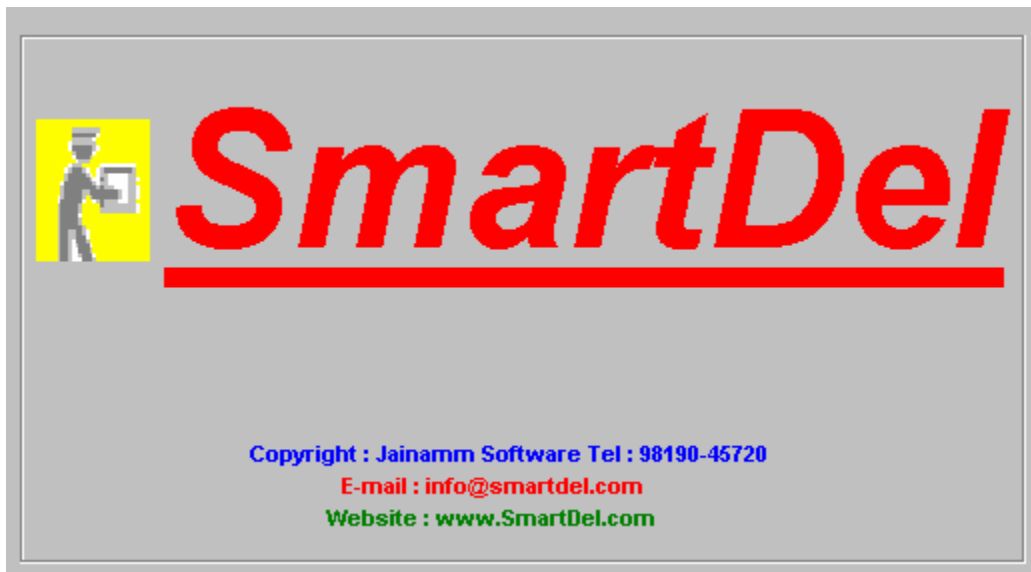
Thank you for purchasing SmartDel software. This document will help you understand functionalities of this Software.

Purpose:

SmartDel software is developed to analyse “Delivery trends” of stocks traded at BSE/NSE Cash market. It also helps to understand the delivery impact on the stock, how the delivery affects the prices. Also you get Volume, Price, % delivery to volume data for both the exchange.

Advantages:

- The software can scan the entire market in a flash.
- You can run any of 55+ queries for either entire market or for your desired sector or portfolio [Data of 100+ sectors, 30+ indices]
- You can select the exchange [only NSE/only BSE/Both combined].
- Advanced Filter Options
- Result output can be exported to Excel



Press <Enter> to get it started.

Jainamm Software

Tel : 98190-45720

Website : www.Jainamm.com // www.SmartDel.com

E-mail : info@jainamm.com

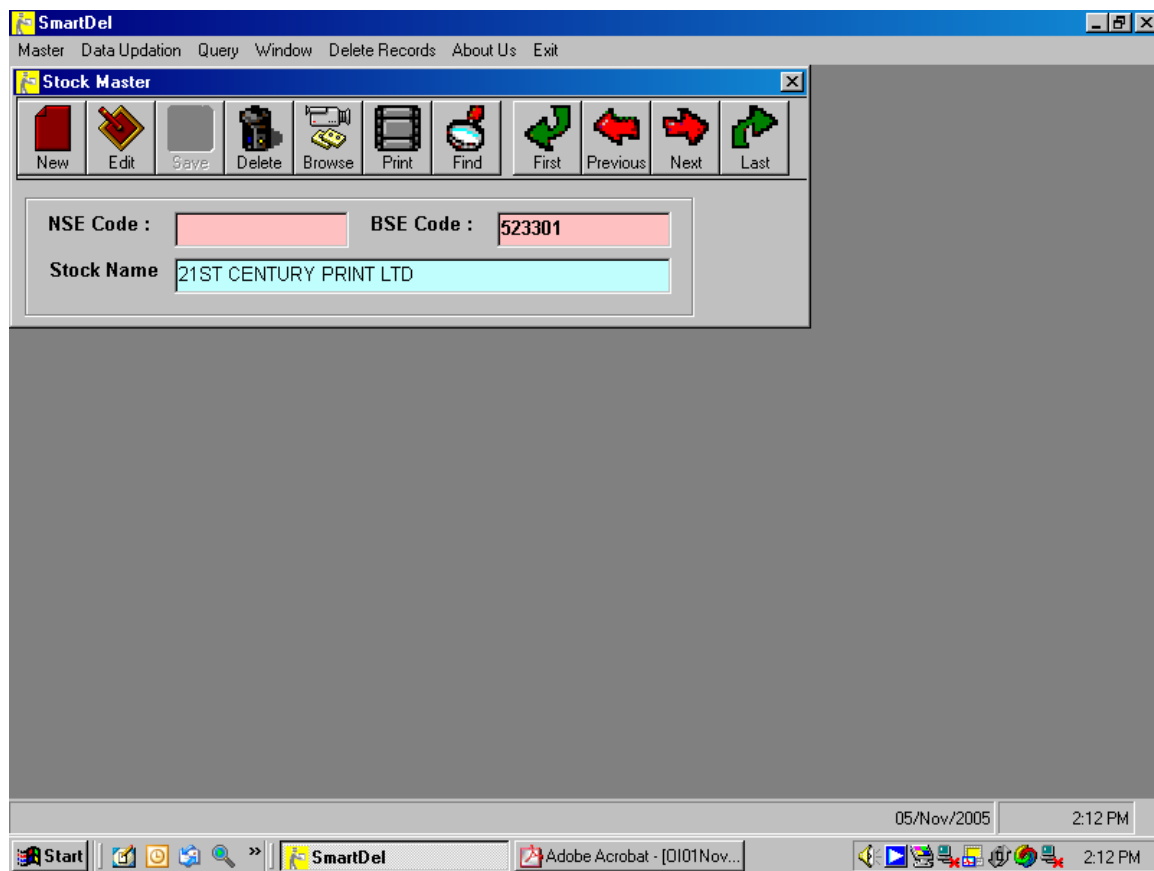
Stock Master

Predefined Stock Master. The Stock Master will be updated regularly, you need to download the new scrips updates from our website <http://www.smartdel.com>.

How to update Stock Master

Go to www.SmartDel.com → Go To Utilities Section → Scroll to Last file on the page → Download /extract UpdateScripMasterForSmartDel into SmartDel folder. Then run UpdateScrip [Application File] from SmartDel folder. [Go to My Computer → C Drive → SmartDel Folder].

Don't forget to Update the ScripMaster regularly.



Jainamm Software

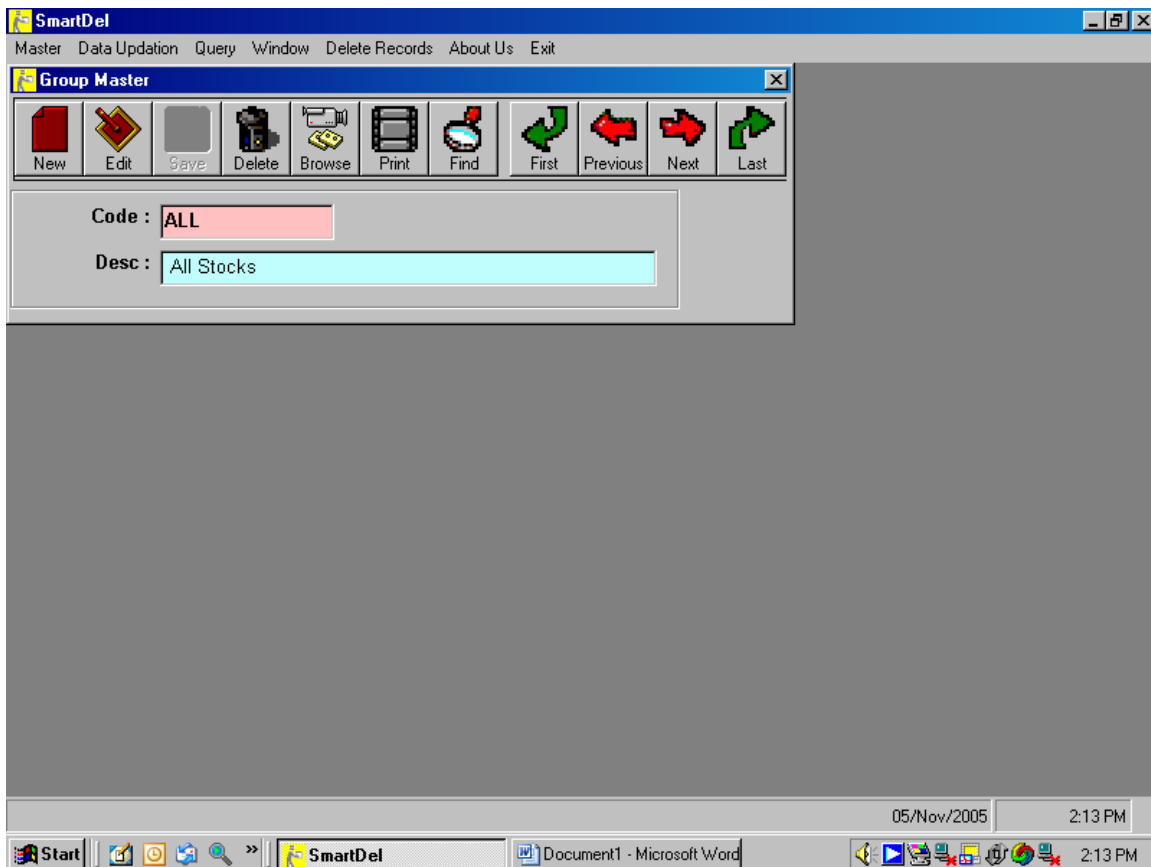
Tel : 98190-45720

Website : www.Jainamm.com // www.SmartDel.com

E-mail : info@jainamm.com

Group Master

One can create a new Group / new Sector from this option.
Click on New Button to enter new group. Make sure that you have added both
Code / Description for the group.



Jainamm Software

Tel : 98190-45720

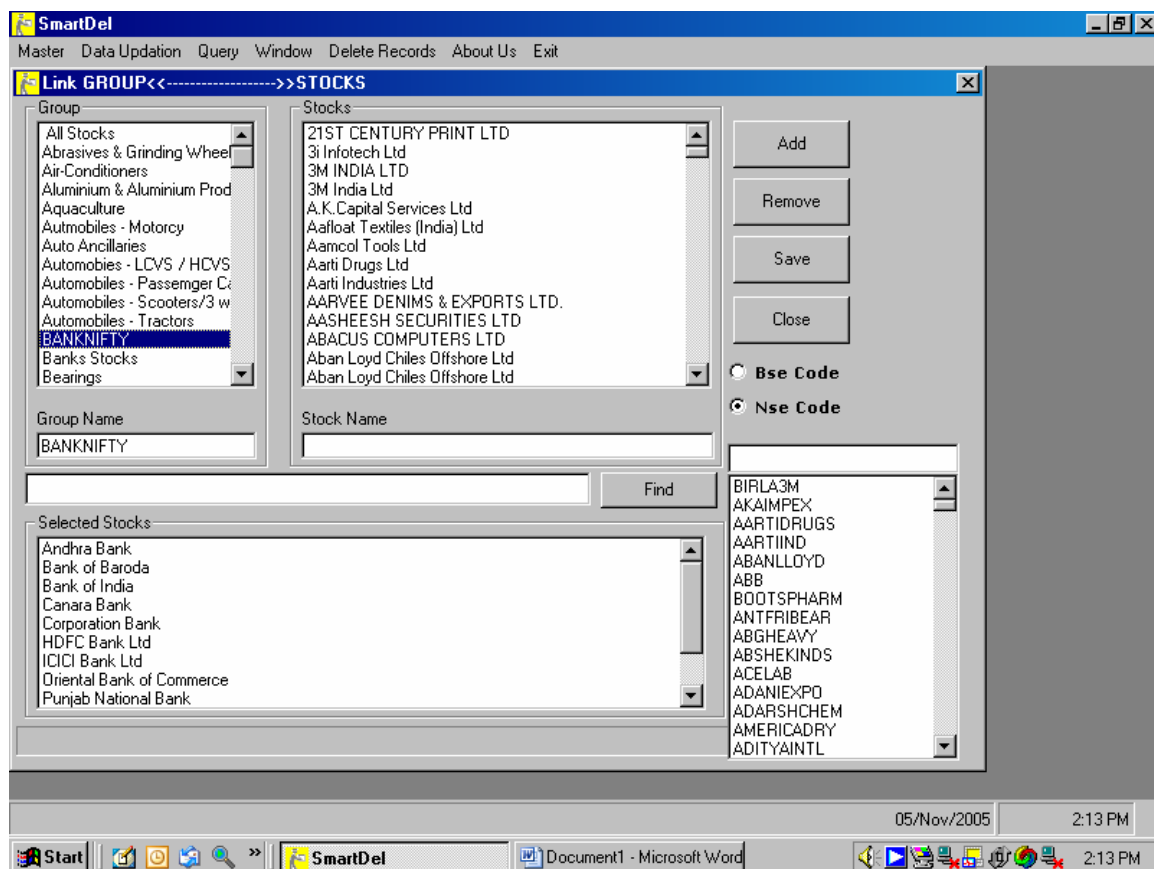
Website : www.Jainamm.com // www.SmartDel.com

E-mail : info@jainamm.com

Link Group With Stock

After creating a group, you need to link the stocks in the Group from this function.

Select your Group from the Group Box, the selected stocks are displayed in the Selected Stock Box, You can select the Stocks by double-clicking the stocks from the Stocks box. Remove the stocks by double-clicking the stocks from the selected stocks box. You can also search for a company in the text box & click on the find button.



Jainamm Software

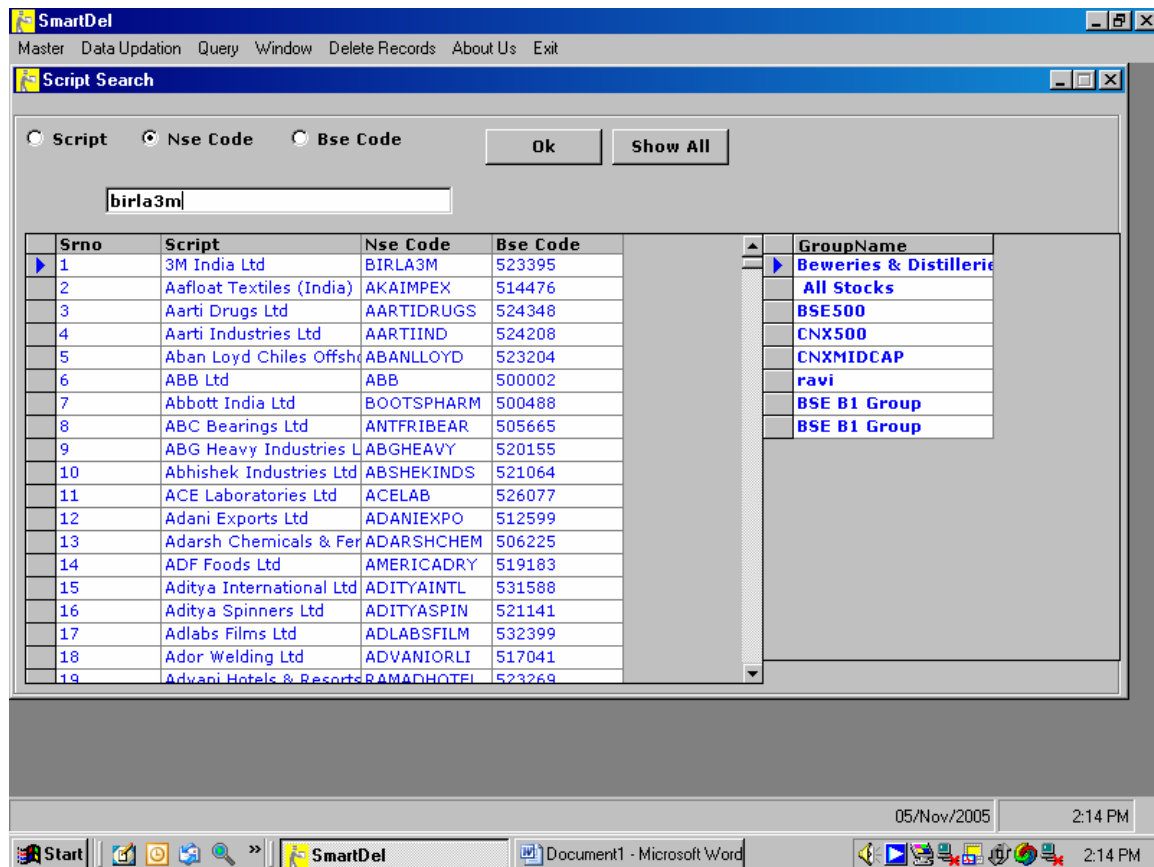
Tel : 98190-45720

Website : www.Jainamm.com // www.SmartDel.com

E-mail : info@jainamm.com

Script Search

This is the new feature added in the software. You can search either on Company Name / NSE Code / BSE code. You can also double click on the row pointer for viewing Sectors in which the scrip falls.



Row pointer



Sector Details.

Jainamm Software

Tel : 98190-45720

Website : www.Jainamm.com // www.SmartDel.com

E-mail : info@jainamm.com

Data Updation

You can do End-Of-Day data updation from this option. Select the date & click on Download from SmartDel.com button. If you are connected to the internet it will download & process the data from SmartDel.com.

If you receive error message then:

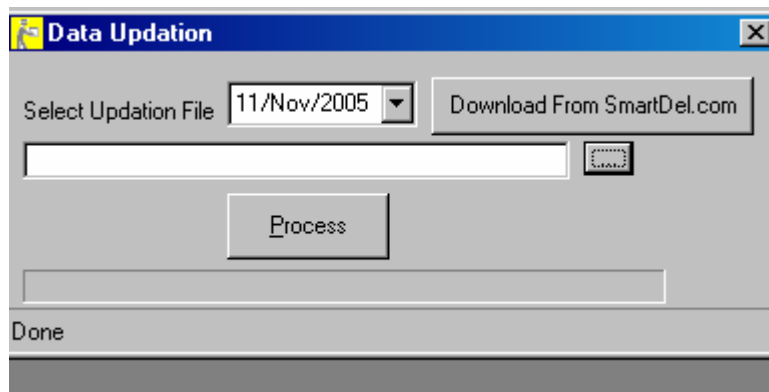
1. make sure you are connected on the internet
2. If you have installed a firewall allow SmartDel Software to access the internet.

Offline Method

If you are not able to do data updation from within the SmartDel software then go to www.SmartDel.com → Subscribers download → Scroll to SmartDel updation files → Right Click on the data file & click on Save Target As → Save in SmartDel folder.

Now click on Data Updation → click on ... button → Select the NBDDMon.csv file [DD – Day, Mon – Month for e.g. NB01Jan.csv for Updation file of 1st Jan & click on process.

Data Updation should be done for every trading day, otherwise Query may not reflect the correct result.



Jainamm Software

Tel : 98190-45720

Website : www.Jainamm.com // www.SmartDel.com

E-mail : info@jainamm.com

Query

The most powerful option of the SmartDel software. SmartDel has 55+ Queries to study the Stock Market. For sake of convenience Queries are categorized under different heads like Average Queries / Statistical Queries / Rising & Falling Queries etc.

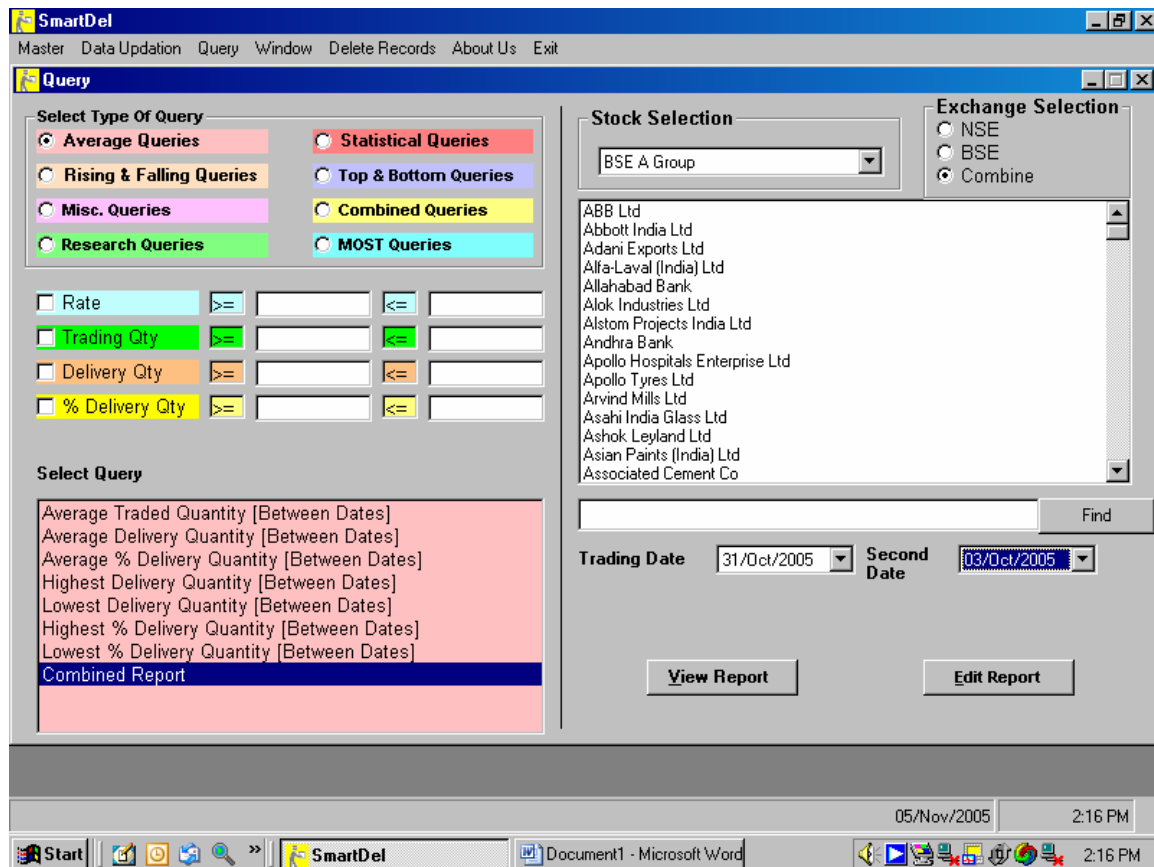
For running any query:

You can select Stock Selection Group [Sector]

Exchange [Only NSE / Only BSE or both Exchange combined]

Trading Date [Starting & Ending Date]

You can click on View Report to Preview / Print the report Or Click on Edit report to Export the result to an Excel Sheet / Change Sorting Order of Columns / Apply Filters.



Jainamm Software

Tel : 98190-45720

Website : www.Jainamm.com // www.SmartDel.com

E-mail : info@jainamm.com

[View Report](#)

Click on View Report button to Preview / Print the Query Report. Also you can use the export button to export the report into HTML or TXT file.

SmartDel - [Combined Report]

Master Data Updation Query Window Delete Records About Us Exit

Zoom 100%

BSE A Group - NSE & BSE

Query: **Combined Report** Date: 31/Oct/2005 - To: 03/Oct/2005

Stock	AvgTradingQty	AvgDeliveryQty	Avg % Dely	HighestDelyQty	LowestDelyQty	HighestVolume
ABB Ltd	60800	38284	57.2	118536	8917	154396
Adani Exports Ltd	923942	113226	18.04	364626	26580	1153800
Alfa-Laval (India) Ltd	9916	9272	80.25	43625	567	44456
Allahabad Bank	1074851	574733	53.06	1035775	120684	2545459
Alok Industries Ltd	1076581	536442	47.34	1397060	169418	2516763
Alstom Projects India Ltd	236455	115670	54.42	283079	20909	841513
Andhra Bank	868807	269635	29.9	812669	114475	1452112
Apollo Hospitals Enterprise Ltd	108992	37986	36.52	84382	15321	322030
Apollo Tyres Ltd	126271	107991	68.09	922281	5910	924584
Arvind Mills Ltd	2137081	943361	43.16	2204765	181924	4383312
Asahi India Glass Ltd	206000	116120	66.23	327133	30871	971797
Ashok Leyland Ltd	4591119	2130836	44.7	4812530	705879	10084288
Asian Paints (India) Ltd	280072	267562	76.69	3004708	5931	3021891
Associated Cement Co	1214636	468677	42.45	1233853	103611	5366721

Pages: 1

05/Nov/2005 2:17 PM

Start SmartDel - [Combined...] Document1 - Microsoft Word 2:17 PM

Jainamm Software

Tel : 98190-45720

Website : www.Jainamm.com // www.SmartDel.com

E-mail : info@jainamm.com

Edit Report

Click on Edit Report for Export To Excel / Filters / Sort etc.

Click on the columns heading to sort ascending / descending.

Click on Export To Excel button to export the result set to a new excel sheet.

Click on Filter button to apply multiple filters on any column of result set.

[For e.g. set filter for Price <= Rs. 50 and TradingQty >= 1000000 and DelyPercQty >= 50], You can also take print out of filtered result set or Export To Excel.

The screenshot displays the SmartDel software window. The title bar reads 'SmartDel'. The menu bar includes 'Master', 'Data Updation', 'Query', 'Window', 'Delete Records', 'About Us', and 'Exit'. The main window is titled 'Query Result' and contains a table with the following data:

Stock	TmDate	Price	TradingQty	DelyQty	DelyPercQty
Jaiprakash Hydro-Powe	11/Nov/2005	31.3	2470552	1998438	80.89
Maars Software Interna	11/Nov/2005	6.1	1005020	509139	50.66
Pentasoftware Technologies	11/Nov/2005	2.4	1093081	673882	61.65
Vishal Exports Oversea	11/Nov/2005	6.8	1289415	764556	59.29

Below the table is a 'Filter' panel with the following settings:

- Price: <= 50
- TradingQty: >= 1000000
- DelyPercQty: >= 50

Buttons in the filter panel include 'Show', 'Show All', and 'Show In Results'. At the bottom of the window is a toolbar with buttons: 'Select Columns To Sort', 'Export To Excel', 'Show Graph', 'Print', 'Refresh Query', 'Filter', and 'Save Group'. The status bar at the bottom right shows the date '11/Nov/2005' and time '8:12 PM'.

Jainamm Software

Tel : 98190-45720

Website : www.Jainamm.com // www.SmartDel.com

E-mail : info@jainamm.com

Explanation to few interested Queries:

Combined Report [under Average Queries]

This report will give you all the different kind of averages, which will help to understand the range in which the stock is moving.

The output will give you Stock wise

- Average Trading Quantity
- Average Delivery Quantity
- Average % Delivery
- Highest Delivery
- Lowest Delivery
- Highest Volume
- Lowest Volume
- High Price
- Low Price

Delivery Qty moving above average Delivery Qty [under Statistical Queries]

You can enter the average delivery period in number of days. [for e.g. 15 days]
This report will give you those stocks which have broken the average delivery qty as specified by you.

Abnormal Change in Delivery Qty Over pervious day [under Statistical Queries]

You can enter the abnormal change in % terms [for e.g. 200%]
This report will give you those stocks which have given abnormal change in deliveries over previous day as specified by you. The report output also gives you the Rate change in % over previous day.

Abnormal Change in Trading Qty Over pervious day [under Statistical Queries]

You can enter the abnormal change in % terms [for e.g. 200%]
This report will give you those stocks which have given abnormal change in trading qty over previous day as specified by you. The report output also gives you the Rate change in % over previous day.

Jainamm Software

Tel : 98190-45720

Website : www.Jainamm.com // www.SmartDel.com

E-mail : info@jainamm.com

Rate change in % over n days [under Statistical Queries]

This report gives you the rate changes / Volume changes in % terms.
[for e.g. Enter 2 days for comparison with previous day or enter 7 days to compare today's rate with average of 7 days]

Groupwise Delivery Statistics over n days [under Statistical Queries]

This report gives you Sectorwise comparison of Volumes & Delivery over no. of days as specified by you.

This report gives you clear indication of which sectors are showing bullish / bearish trend, also which sector has gone up highest in the market.

Rate above/below High/Low [under Statistical Queries]

This report identifies those stocks which have broken high/low rate of no. of days as specified by you.

For e.g. You want to identify those stocks which have broken either high or low rate of last 15 days.

Rising delivery qty for n days [under Rising & Falling Queries]

This report identifies those stocks which have shown consecutive rise in deliveries for no. of days as specified by you.

For e.g. you want to identify those stocks which have shown consecutive rise in deliveries for 3 days.

Same way you can run queries for Trading Qty / Rates.

Top n trading qty [for the day] [under Top & Bottom Queries]

This report identifies the Top n traded stock for the day along with their previous trading qty.

Same way you can run queries for delivery qty / % delivery qty
Also you can run queries for bottom side.

Jainamm Software

Tel : 98190-45720

Website : www.Jainamm.com // www.SmartDel.com

E-mail : info@jainamm.com

Top n by Delivery value [in Rs terms] [under Top & Bottom Queries]

This report identifies the top n stock by their delivery value in rupee terms along with there previous delivery value.

View All Records [Under Misc Queries]

This report helps you in giving historical analysis of delivery pattern / trading pattern of a given stock or all stocks under a group [sector]. You can select multiple stocks & starting & ending date. You can also search for a particular company.

Total Delivery Value [Under Misc Queries]

This report gives you the date wise total delivery / total turnover of both the exchange. You can also select one particular group [sector].

Total Delivery Value – Group wise [Under Misc Queries]

This report gives you GroupWise [selectorial] bifurcation of deliveries / volumes You can also select the starting / ending date to analyse deliveries over a period of time.

Rising Traded Qty and Rising Delivery Qty [Under Combined Queries]

This report gives you those stocks which have given a consecutive rise in Traded Qty as well as consecutive rise in delivery qty over no. of trading days as specified by you.

Same way you can query for
Rising Traded Qty and Falling Delivery Qty
Falling Traded Qty and Rising Delivery Qty
Falling Traded Qty and Falling Delivery Qty

Depending upon the market you can query the above mix-n-match queries.

Jainamm Software

Tel : 98190-45720

Website : www.Jainamm.com // www.SmartDel.com

E-mail : info@jainamm.com

Rising Traded Qty and Rising % Delivery Qty [Under Combined Queries]

This report gives you those stocks which have given a consecutive rise in Traded Qty as well as consecutive rise in % delivery qty over no. of trading days as specified by you.

Same way you can query for
Rising Traded Qty and Falling % Delivery Qty
Falling Traded Qty and Rising % Delivery Qty
Falling Traded Qty and Falling % Delivery Qty

Depending upon the market you can query the above mix-n-match queries.

Rising Price and Rising Delivery Qty [Under Combined Queries]

This report gives you those stocks which have given a consecutive rise in Price as well as consecutive rise in delivery qty over no. of trading days as specified by you.

Same way you can query for
Rising Price and Falling Delivery Qty
Falling Price and Rising Delivery Qty
Falling Price and Falling Delivery Qty

Depending upon the market you can query the above mix-n-match queries.

Rising Traded Qty, Rising Delivery Qty, Rising Price [Under Combined Queries]

This report gives you those stocks which have given a consecutive rise in volume & deliveries & Price over no. of trading days as specified by you.

To Speed Up the SmartDel Software CompactDatabase

If the SmartDel software has gone slow, run CompactDatabase [application file] from SmartDel folder. If you don't have one download from www.smartdel.com/utilities/compactdatabase.zip & extract the file in SmartDel folder. Running CompactDatabase should speed up the queries.

Also if you don't want older data [historical data], you can delete the data from Delete Records option & then run CompactDatabase

Jainamm Software

Tel : 98190-45720

Website : www.Jainamm.com // www.SmartDel.com

E-mail : info@jainamm.com

Delete Records

This feature allows you to delete the past records.

Exit

To quit the software

Jainamm Software

Tel : 98190-45720

Website : www.Jainamm.com // www.SmartDel.com

E-mail : info@jainamm.com